

PL2C500_2009_USD_SAT_Tab p1/2 01-26-2007 SAT / SPIRIG ADVANCED TECH. INC., 144 OAKLAND STREET, SPRINGFIELD, MA 01108 PH: 1-866-977-4744 SAT@SPIRIG.COM

CELSI® Temperature -Measuring & Recording Labels

USD

FAX- ORDER FORM

2009

-> Fax Spirig USA -> 1-413-788-0490

-> e-shop: www.celsi.com

-> e-mail: sat@spirig.com

| Parts designation | | system # | temperature levels in °C | | | | | | | | | | number of identical labels per packing unit | dimensions of the "Celsi-Label" in mm | enter order quantity here | | | |
|---------------------------------------|--------|---------------------------------|--------------------------|---------|-------|-------|-------|-------|--|--|--|--|---|---------------------------------------|---------------------------|-------|------|--|
| | | | | | | | | | | | | | | | price per packing unit | | | |
| | | | | | | | | | | | | | | | qty of packing units | | | |
| | | | | | | | | | | | | | | | 1- 49 | 50-99 | 100+ | |
| | | | | | | | | | | | | | | | USD per packing unit | | | |
| CelsiStrip® / CS-E (encaps.) | #10992 | 210 216 224 232 241 249 254 260 | 15 x 45 | 10 | 19.50 | 16.00 | 12.50 | | | | | | | | | | | |
| CelsiStrip® / CS-D (encaps.) | #10990 | 166 171 177 182 188 193 199 204 | 15 x 45 | 10 | 19.50 | 16.00 | 12.50 | | | | | | | | | | | |
| CelsiStrip® / CS-C (encaps.) | #10984 | 121 127 132 138 143 149 154 160 | 15 x 45 | 10 | 19.50 | 16.00 | 12.50 | | | | | | | | | | | |
| CelsiStrip® / CS-B01 (encaps.) | #10981 | 88 93 99 104 110 116 121 127 | 15 x 45 | 10 | 19.50 | 16.00 | 12.50 | | | | | | | | | | | |
| CelsiStrip® / CS-B (encaps.) | #10980 | 77 82 88 93 99 104 110 116 | 15 x 45 | 10 | 19.50 | 16.00 | 12.50 | | | | | | | | | | | |
| CelsiStrip® / CS-A (encaps.) | #10978 | 40 43 46 49 54 60 66 71 | 15 x 45 | 10 | 19.50 | 16.00 | 12.50 | | | | | | | | | | | |
| CelsiStrip® / CS-232/260 | #10976 | 232 241 249 254 260 | (encaps.) | 15 x 45 | 10 | 16.00 | 14.00 | 11.50 | | | | | | | | | | |
| CelsiStrip® / CS-199/254 | #10974 | 199 210 224 241 254 | (encaps.) | 15 x 45 | 10 | 16.00 | 14.00 | 11.50 | | | | | | | | | | |
| CelsiStrip® / CS-199/224 | #10972 | 199 204 210 216 224 | (encaps.) | 15 x 45 | 10 | 16.00 | 14.00 | 11.50 | | | | | | | | | | |
| CelsiStrip® / CS-171/193 | #10970 | 171 177 182 188 193 | (encaps.) | 15 x 45 | 10 | 16.00 | 14.00 | 11.50 | | | | | | | | | | |
| CelsiStrip® / CS-143/188 | #10968 | 143 154 166 177 188 | (encaps.) | 15 x 45 | 10 | 16.00 | 14.00 | 11.50 | | | | | | | | | | |
| CelsiStrip® / CS-143/166 | #10966 | 143 149 154 160 166 | (encaps.) | 15 x 45 | 10 | 16.00 | 14.00 | 11.50 | | | | | | | | | | |
| CelsiStrip® / CS-116/138 | #10964 | 116 121 127 132 138 | (encaps.) | 15 x 45 | 10 | 16.00 | 14.00 | 11.50 | | | | | | | | | | |
| CelsiStrip® / CS-088/132 | #10962 | 88 99 110 121 132 | (encaps.) | 15 x 45 | 10 | 16.00 | 14.00 | 11.50 | | | | | | | | | | |
| CelsiStrip® / CS-088/110 | #10960 | 88 93 99 104 110 | (encaps.) | 15 x 45 | 10 | 16.00 | 14.00 | 11.50 | | | | | | | | | | |
| CelsiStrip® / CS-060/082 | #10958 | 60 66 71 77 82 | (encaps.) | 15 x 45 | 10 | 16.00 | 14.00 | 11.50 | | | | | | | | | | |
| CelsiStrip® / CS-054/088 | #10956 | 54 66 71 77 82 88 | (encaps.) | 15 x 45 | 10 | 16.00 | 14.00 | 11.50 | | | | | | | | | | |
| CelsiStrip® / CS-040/077 | #10954 | 40 46 54 66 77 | (encaps.) | 15 x 45 | 10 | 16.00 | 14.00 | 11.50 | | | | | | | | | | |
| CelsiStrip® / CS-040/054 | #10952 | 40 43 46 49 54 | (encaps.) | 15 x 45 | 10 | 16.00 | 14.00 | 11.50 | | | | | | | | | | |
| MICRO-CelsiStrip® / MC-060/093 | #10995 | 60 71 82 93 | (encaps.) | 5 x 9 | 10 | 19.50 | 16.00 | 12.50 | | | | | | | | | | |
| CelsiClock® / CC-232/260 | #10248 | 232 241 249 254 260 | (encaps.) | ø 14 | 10 | 16.00 | 14.00 | 11.50 | | | | | | | | | | |
| CelsiClock® / CC-199/224 | #10246 | 199 204 210 216 224 | (encaps.) | ø 14 | 10 | 16.00 | 14.00 | 11.50 | | | | | | | | | | |
| CelsiClock® / CC-171/193 | #10244 | 171 177 182 188 193 | (encaps.) | ø 14 | 10 | 16.00 | 14.00 | 11.50 | | | | | | | | | | |
| CelsiClock® / CC-143/166 | #10242 | 143 149 154 160 166 | (encaps.) | ø 14 | 10 | 16.00 | 14.00 | 11.50 | | | | | | | | | | |
| CelsiClock® / CC-116/138 | #10238 | 116 121 127 132 138 | (encaps.) | ø 14 | 10 | 16.00 | 14.00 | 11.50 | | | | | | | | | | |
| CelsiClock® / CC-088/110 | #10233 | 88 93 99 104 110 | (encaps.) | ø 14 | 10 | 16.00 | 14.00 | 11.50 | | | | | | | | | | |
| CelsiClock® / CC-060/082 | #10231 | 60 66 71 77 82 | (encaps.) | ø 14 | 10 | 16.00 | 14.00 | 11.50 | | | | | | | | | | |
| CelsiClock® / CC-040/054 | #10227 | 40 43 46 49 54 | (encaps.) | ø 14 | 10 | 16.00 | 14.00 | 11.50 | | | | | | | | | | |
| CelsiDot® / CD- . . °C | #..... | .. <- select a T-value | (encaps.) | 11 x 15 | 24 | 9.50 | 7.00 | - | | | | | | | | | | |
| JUMBO-CelsiDot® / CDJ-93°C | #16151 | 93 <- standard T-value | (encaps.) | 19 x 19 | 24 | 24.00 | 21.50 | - | | | | | | | | | | |
| JUMBO-CelsiDot® / CDJ-54°C | #16235 | 54 <- standard T-value | (encaps.) | 19 x 19 | 24 | 24.00 | 21.60 | - | | | | | | | | | | |
| CelsiPoint® / CP- . . °C | #..... | .. <- select a T-value | (encaps.) | ø 10 | 24 | 9.50 | 7.00 | - | | | | | | | | | | |
| MICRO-CelsiPoint® / CPM-143°C | #16175 | 143 <- standard T-value | (encaps.) | ø 5 | 24 | 19.50 | 16.00 | - | | | | | | | | | | |

MICRO-CelsiPoint® / JUMBO-CelsiDot® / MICRO-CelsiStrip® <- other temperature values on request

| | | | | | | | | | | | | | | | | | | | | | |
|----|-----|-----|-----|-----|-----|-----|-----|-----|-----|-----|-----|-----|-----|-----|-----|-----|-----|-----|-----|-----|--------------|
| °C | 143 | 149 | 154 | 169 | 166 | 171 | 177 | 182 | 188 | 193 | 199 | 204 | 210 | 216 | 224 | 232 | 241 | 249 | 254 | 260 | ° Celsius |
| °F | 290 | 300 | 310 | 320 | 330 | 340 | 350 | 360 | 370 | 380 | 390 | 400 | 410 | 420 | 435 | 450 | 465 | 480 | 490 | 500 | ° Fahrenheit |
| °C | 40 | 43 | 46 | 49 | 54 | 60 | 66 | 71 | 77 | 82 | 88 | 93 | 99 | 104 | 110 | 116 | 121 | 127 | 132 | 138 | ° Celsius |
| °F | 105 | 110 | 115 | 120 | 130 | 140 | 150 | 160 | 170 | 180 | 190 | 200 | 210 | 220 | 230 | 240 | 250 | 260 | 270 | 280 | ° Fahrenheit |

CelsiStrip® (5, 6 & 8 level), CelsiClock®, JUMBO-CelsiDot® & MICRO-CelsiStrip® & MICRO-Celsipoint® also available on less expensive rolls ea 1000 units. Standard CelsiDot® & CelsiPoint® also available on less expensive rolls ea 1200 units. Please call for prices. Minimum order \$25.00. Orders under \$25.00 subject to a \$5.00 handling charge. For larger quantities or rolls contact our sales Dept. for a quotation. All prices subject to change without notice. Minimum charge of \$5.00 for shipping and handling applies to all orders. Add \$9.00 for COD. All Prices are FOB Springfield, MA. net 30 days.

Celsi[®] Temperature Sensing Labels

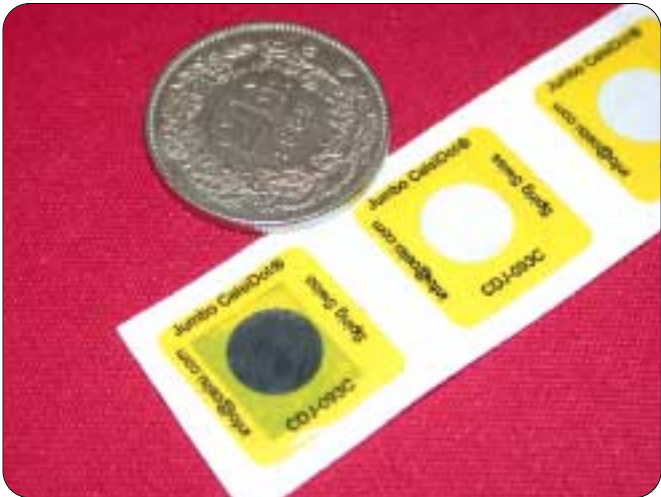
Apply and Forget! irreversible temperature level recording labels. Self-adhesive, easy applicable on any surface. Forty levels to choose from +40°C (105F) to +260°C (550F) and arranged in various combinations. Accuracy ±1,5%. Permanent blackening of the original white level clearly indicates that level had been exceeded.



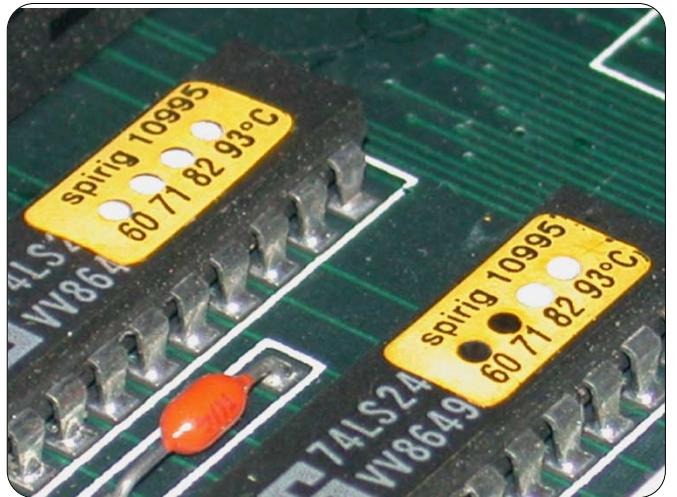
CelsiStrip[®] with 5 temperature levels. Also 8 levels (not shown here) available. Here 60°C are exceeded but 77°C never reached.



CelsiClock[®] with 5 temperature levels. CelsiClock[®]'s are also available with other temperature values and arrangements.



JUMBO-CelsiDot[®] with one level at 93°C. Left CDJ exceeded sometime in the past its 93°C level. CDJ to the right not heated.



MICRO-CelsiStrip[®] with temperature levels 60 and 71°C surely exceeded. The 82°C never reached in the label's watch mission.



CelsiPoint[®] with one 82°C level. CP on left side exceeded and on right side never exposed to or above 82°C.



CelsiDot[®]'s with 93°C level and **MICRO-CelsiStrip[®]** s applied to an automotive electronic control before life test.

e - s h o p - - - > w w w . c e l s i . c o m

SPIRIG
S W I T Z E R L A N D

manufactured by Ernest Spirig
CH-8640 Rapperswil Switzerland
ph: (+41) 55 222 6900 fax: (+41) 55 222 6969
e-mail: info@spirig.com http://www.spirig.com

distribution USA: **Spirig Advanced Tech. Inc.**
144 Oakland Street, Springfield, MA01108,
ph: 1-800-628-8862 fax: 1-413-788-0490
e-mail: sat@spirig.com